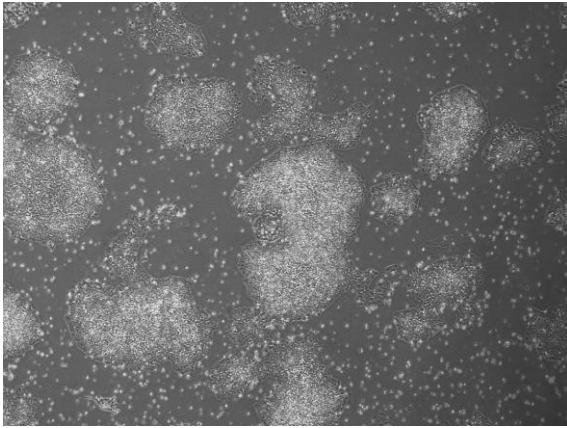
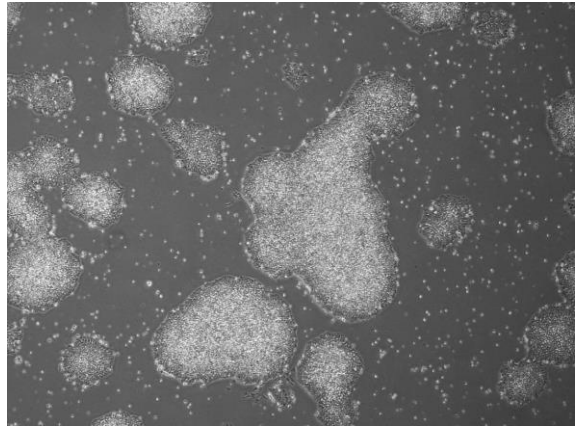


【 CiRA-j-1502 】 Morphology of iPSC colonies

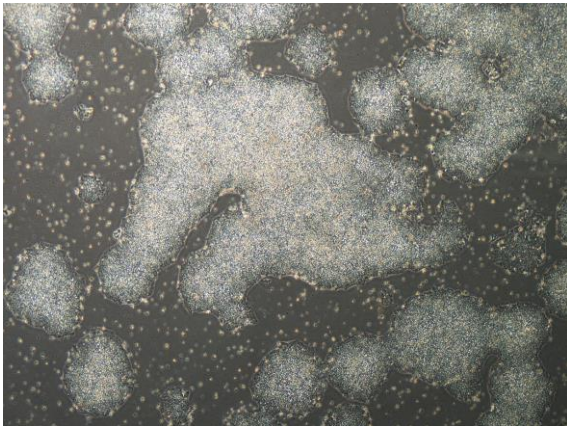
CiRA-j-1502-A: passage-3



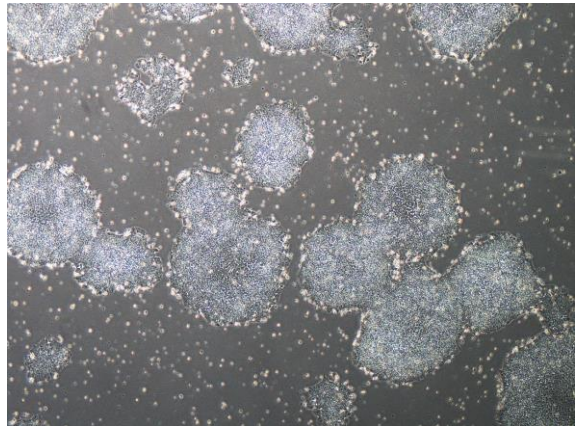
CiRA-j-1502-B: passage-3



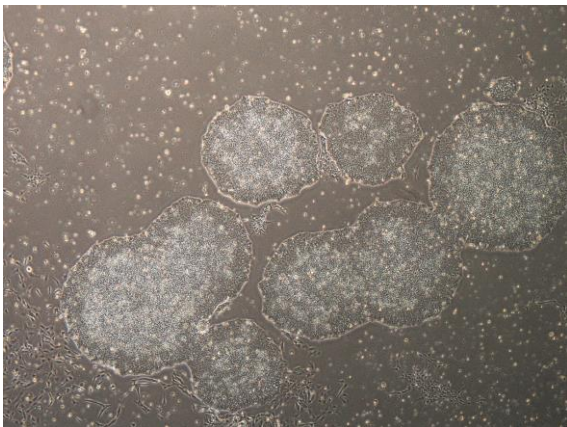
CiRA-j-1502-C: passage-3



CiRA-j-1502-D: passage-3



CiRA-j-1502-E: passage-3



CiRA-j-1502-F: passage-3



(All images were captured at 4x magnification)